

50 YEARS
NACHI
 NACHI EUROPE GmbH
 OUR SYNERGY
 YOUR PERFORMANCE

BEARINGS



BEARINGS



TOOLS



ROBOTICS



HYDRAULICS



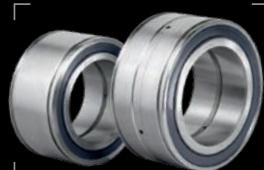
“NACHI has been developing rolling bearings since 1939. These durable allrounders have solved many problems in a wide variety of applications all over the world.”



Deep Groove Ball Bearings



Spherical Roller Bearings



Cylindrical Roller Bearings

BEARINGS

Since 1939 NACHI has been developing roller bearings that convince with their high quality. Each production step is made and controlled in NACHI's own plants, from steel plant and the heat treatment to the machining of the components and the assembly of the bearings.

Today NACHI delivers a wide range of ball-, roller-, spherical-roller- and precision-roller-bearings for applications in general machinery, agriculture, transmission, fluid, aerospace and in the demanding automotive industry.

Deep Groove Ball Bearings

Sophisticated sealing technology and innovative lubrication technology allow a long-term operation at temperatures from -40°C to $+140^{\circ}\text{C}$ as a standard. The deep groove ball bearing series Quest offers double the lifetime when operated at $+120^{\circ}\text{C}$ compared to standard deep groove ball bearings.

Spherical Roller Bearings

NACHI's spherical roller bearings have the highest load ratings worldwide. Innovations like the optimized curvature of the raceways and the general heat resistance up to $+200^{\circ}\text{C}$ have proved that NACHI is a worldwide leader in bearing technology. Customers rely on the narrow tolerances and the long lifetime of NACHI bearings while operated with high axial loads. Various shapes of rollers and cages enable a wide range of applications.

Precision Rolling Bearings

Due to highest precision, rigidity and optimized lubrication, as well as sturdiness and excellent sealing technology, NACHI's precision bearings are the best possible choice. Customers appreciate the simple mounting and the pre-assembled bearing units.



**No.1
IN THE
WORLD**

Spherical roller bearings with the highest load rating in the world.



Applications in General and Automotive Industry

NACHI's roller bearings stand for highest quality. The comprehensive product range satisfies the needs of customers all over the world. Innovations and all-out quality – **Made in Japan**. NACHI's roller bearings provide long lifetime and easy installation in a broad range of applications.

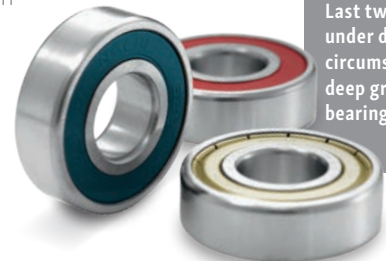
Industrial Applications:

With its wide product range and extensive services, NACHI Europe is a preferred partner of mechanical engineering, machine tool builders, gear-box manufacturers, manufacturers of cranes, grippers and electric drives.

Customers obtain the highest reliability in their individual applications by using NACHI's roller bearings.

Main Advantages: Deep Groove Ball Bearings

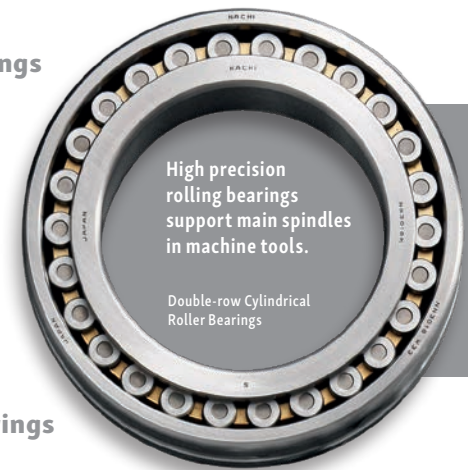
- ▶ long service time provides low operation and maintenance costs
- ▶ higher speeds at lower operation temperatures
- ▶ proven lubrication technology
- ▶ 100% noise tested



Last twice as long under demanding circumstances: NACHI deep groove ball bearings Quest-series.
Deep Groove Ball Bearings

Main Advantages: Spherical Roller Bearings

- ▶ highest load ratings worldwide due to larger rolling elements
- ▶ compact design
- ▶ long lifetime and cost efficiency due to pure, high-quality steel



High precision rolling bearings support main spindles in machine tools.

Double-row Cylindrical Roller Bearings

Main Advantages: Precision Rolling Bearings

- ▶ high precision for excellent running accuracy
- ▶ high-performance lubrication provides sufficient lubrication even at low speeds
- ▶ innovative, low-friction sealings reduce the initial torque
- ▶ profitable and extremely durable



NACHI's ultrathin bearings find application in the strain wave gear of the famous JPL Mars Rover.

Mars Rover
© Courtesy NASA/JPL-Caltech

Automotive Applications:

The high level of NACHI's roller bearings is forced by the quality management of the automotive industry. At NACHI, industrial products have to meet equal quality criteria. Installed in joint shafts NACHI's roller bearings provide stable and safe traction. In addition, NACHI is the market leader for ball bearings in mobile air-conditioning systems.

Spherical Roller Thrust Bearings



**No.1
IN THE
WORLD**

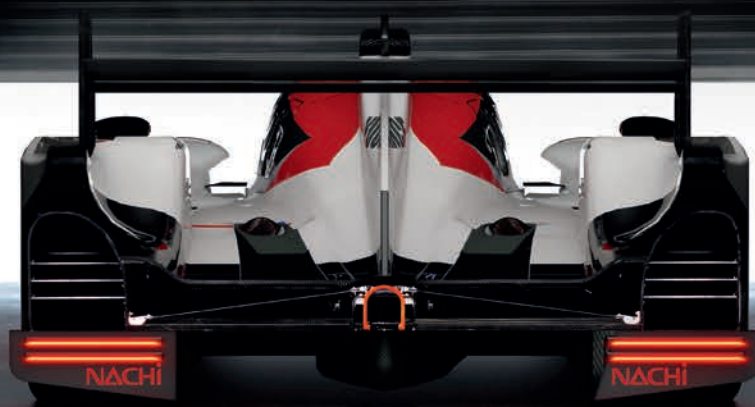
Double-Row Angular Contact Ball Bearings for automobile air conditioners.



**No.1
IN THE
WORLD**

Roller Bearings for Constant Velocity Joints.

50 YEARS
NACHI
NACHI EUROPE GmbH
**OUR SYNERGY
YOUR PERFORMANCE**



NACHI-FUJIKOSHI CORP.

TOKYO

Shiodome Sumitomo Bldg., 1-9-2 Higashi-shinbashi, Minato-ku Tokyo, JAPAN
Phone: +81 3 5568-5240 | Fax: +81 3 5568-5236

TOYAMA

1-1-1 Fujikoshi-Honmachi, Toyama, JAPAN
Phone: +81 76 423-5111 | Fax: +81 76 493-5211

Web: www.nachi-fujikoshi.co.jp/

NACHI EUROPE GmbH

Bischofstr. 99 | DE-47809 Krefeld, Germany | Phone: +49 2151 650 46-0 | Fax: +49 2151 650 46-90 | Web: www.NACHI.de | Email: info@NACHI.de